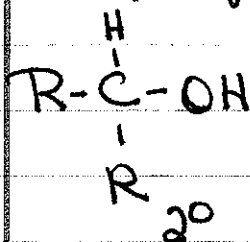
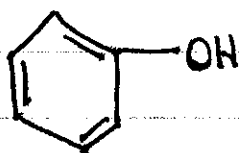
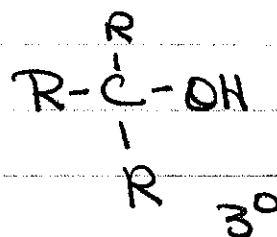


* Intro to Alcohols Answers (Warm-up)

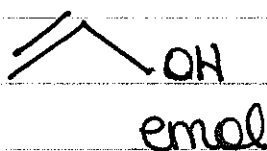
① CH_3OH
Methyl ROH



$\text{R}-\text{CH}_2\text{OH}$
 1°



phenol



enol

RCH_2SH
thiol



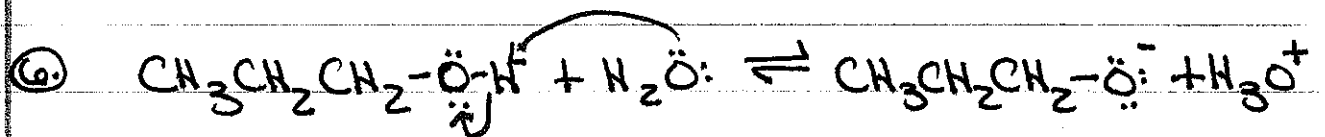
thiophenol

② Higher: Ability to H bond

③ Hydrophobic = CH : Hydrophilic = OH :
more C = less H_2O soluble

④ Bromated hairy

⑤ Stronger



$$K_a = \frac{[\text{CH}_3\text{CH}_2\text{CH}_2\text{O}^-][\text{H}_3\text{O}^+]}{[\text{CH}_3\text{CH}_2\text{CH}_2\text{OH}]}$$

⑦ increased branching decreases acidity:
branching interrupts solvation / stabilization
of conjugate base

⑧ e⁻ w/drawing groups increase acidity:
e⁻ w/drawing groups stabilize the conjugate
base by induction